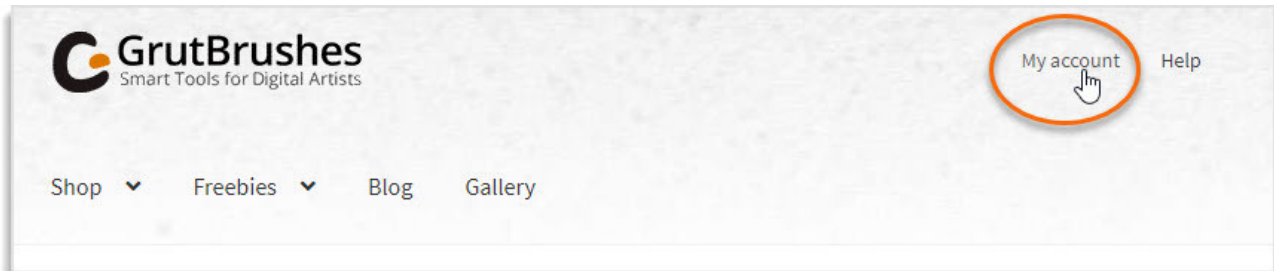
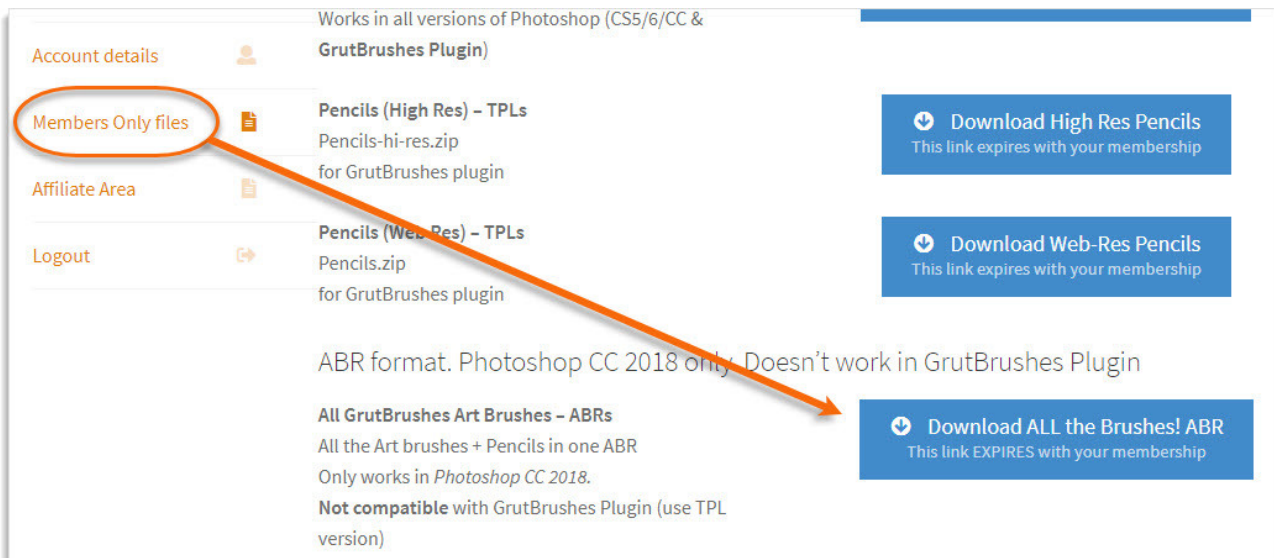


How to install GrutBrushes Art Brushes Complete (ABR version)

If you haven't downloaded your files yet, click on 'my account' then login with your email and password (Unless you're already logged in)



click 'remember me' If you'd like to log in automatically next time. Then go to the 'members only' files. Scroll down to find the file you want to install.



In this case, we going to install the ABR file.

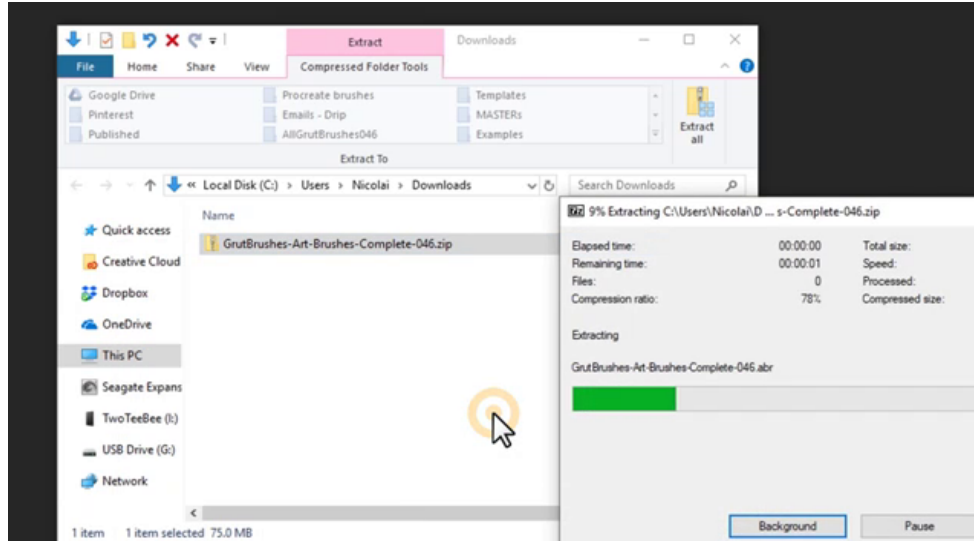
Click on the blue button it to download it.

How to install GrutBrushes Art Brushes Complete (ABR version)

Find and unzip the file you just downloaded.

Mac: Double click to unzip **Windows:** Right-click and select, "extract" or "UNZIP".

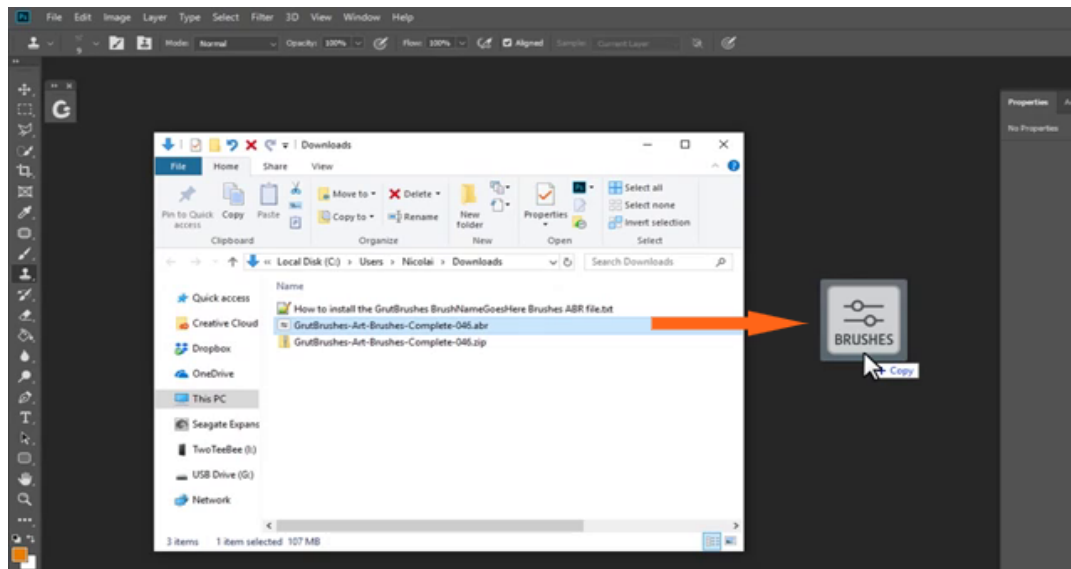
Now you are ready to install your brushes!



Installation Method 1:

Either right click on the ABR file and select 'Open in Photoshop'

Or you can simply drag the ABR file right into Photoshop like this:

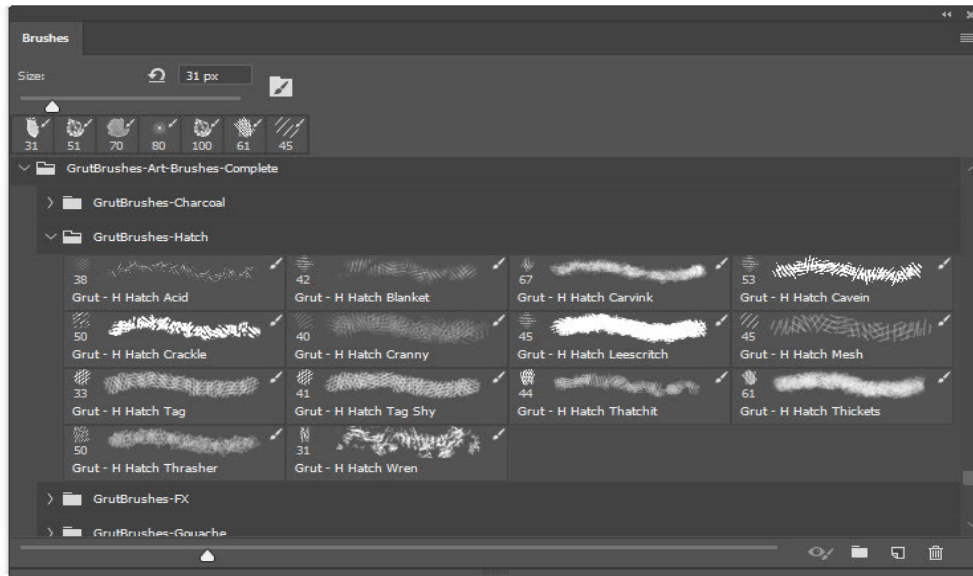


Your brushes should now be installed.

To find your brushes, open the brushes panel (*Window > Brushes*)

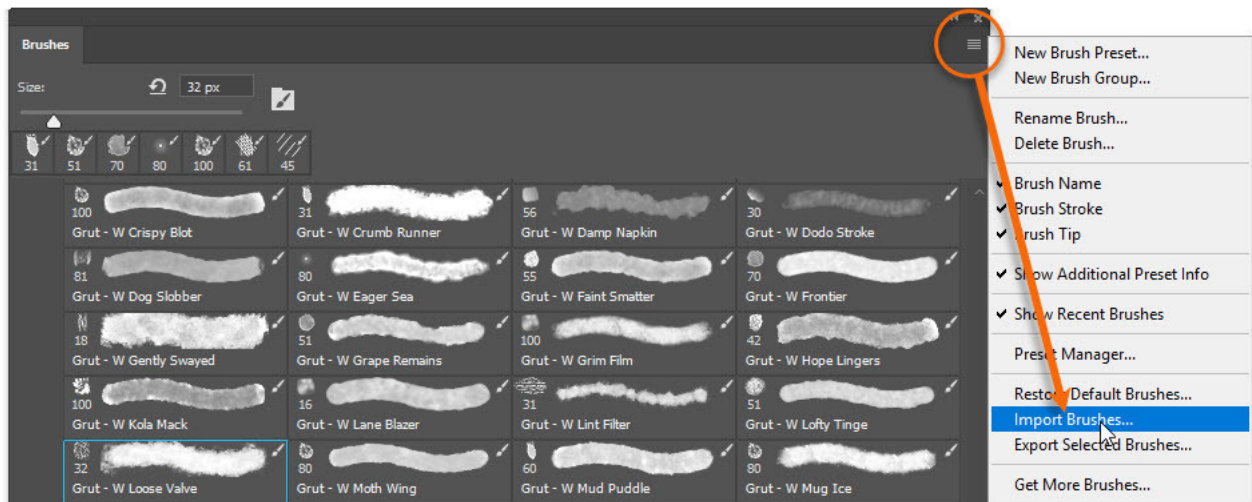
How to install GrutBrushes Art Brushes Complete (ABR version)

Scroll down to the very bottom of the brushes panel and you will see the brushes you just installed divided into folders according to type



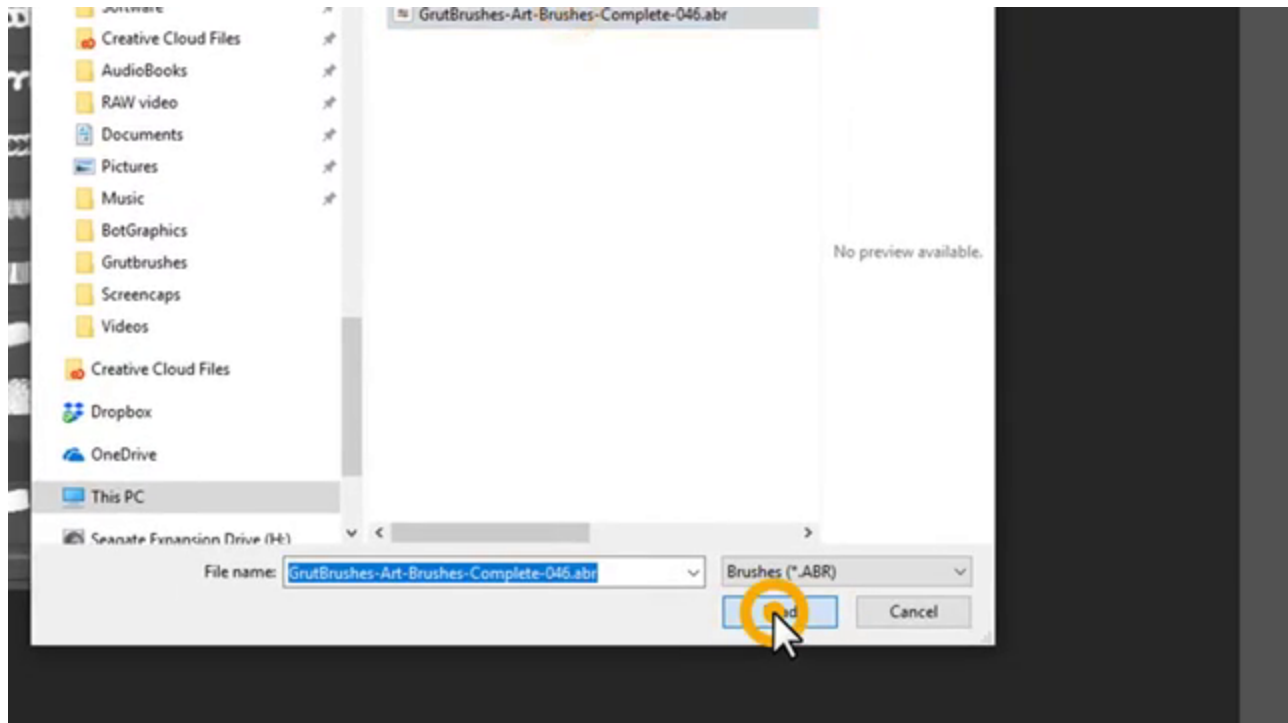
Installation Method 2:

Alternatively, if you can't drag or drop it into Photoshop, open the brushes panel and click in the top right corner and select import brushes.



How to install GrutBrushes Art Brushes Complete (ABR version)

Find the ABR file you extracted earlier (from the zip file)



Click 'Load', and your brushes will be imported at the bottom of the brushes panel.

That's it! HAVE FUN