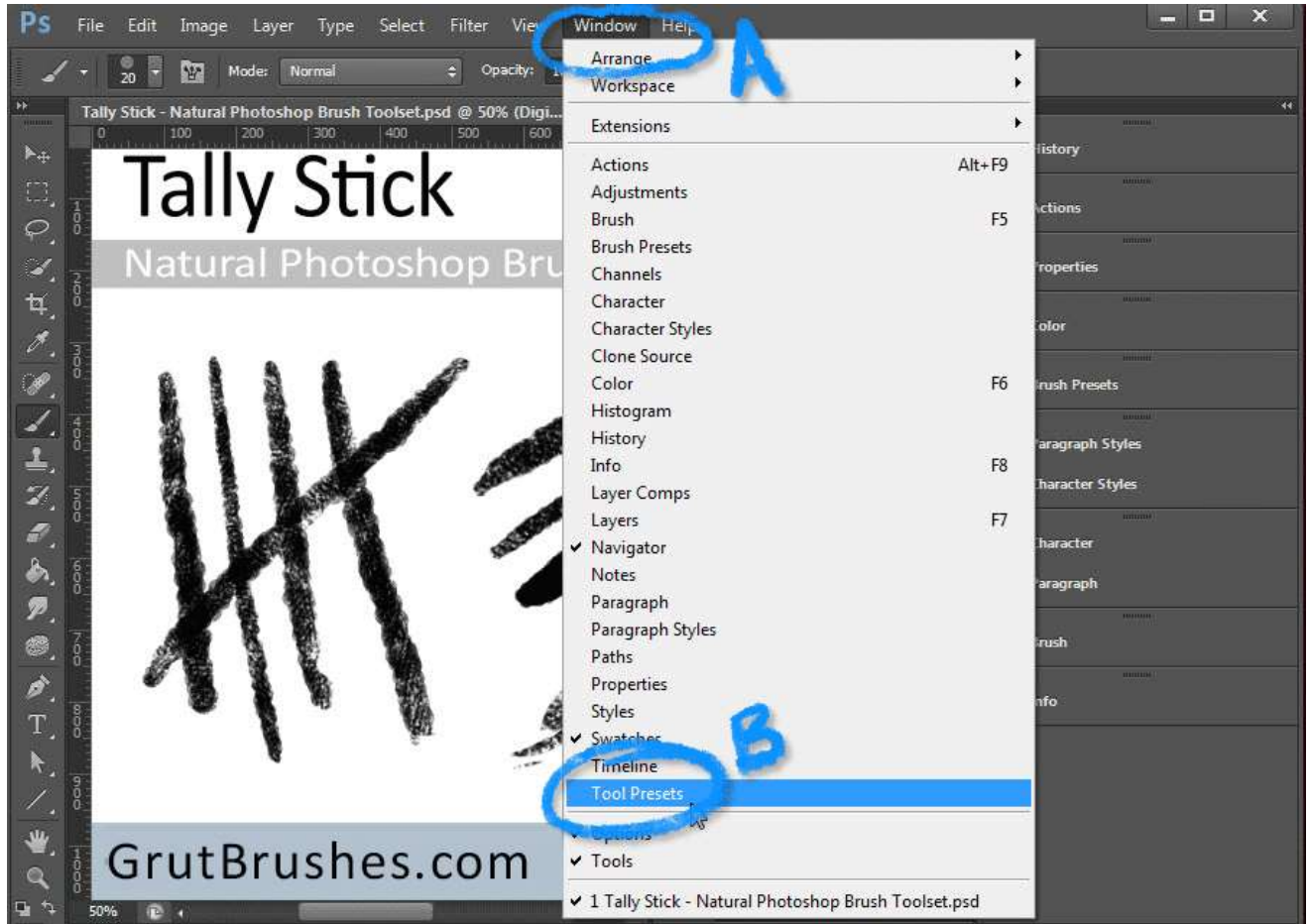


How to Install Photoshop Brush Toolsets (tpl files)

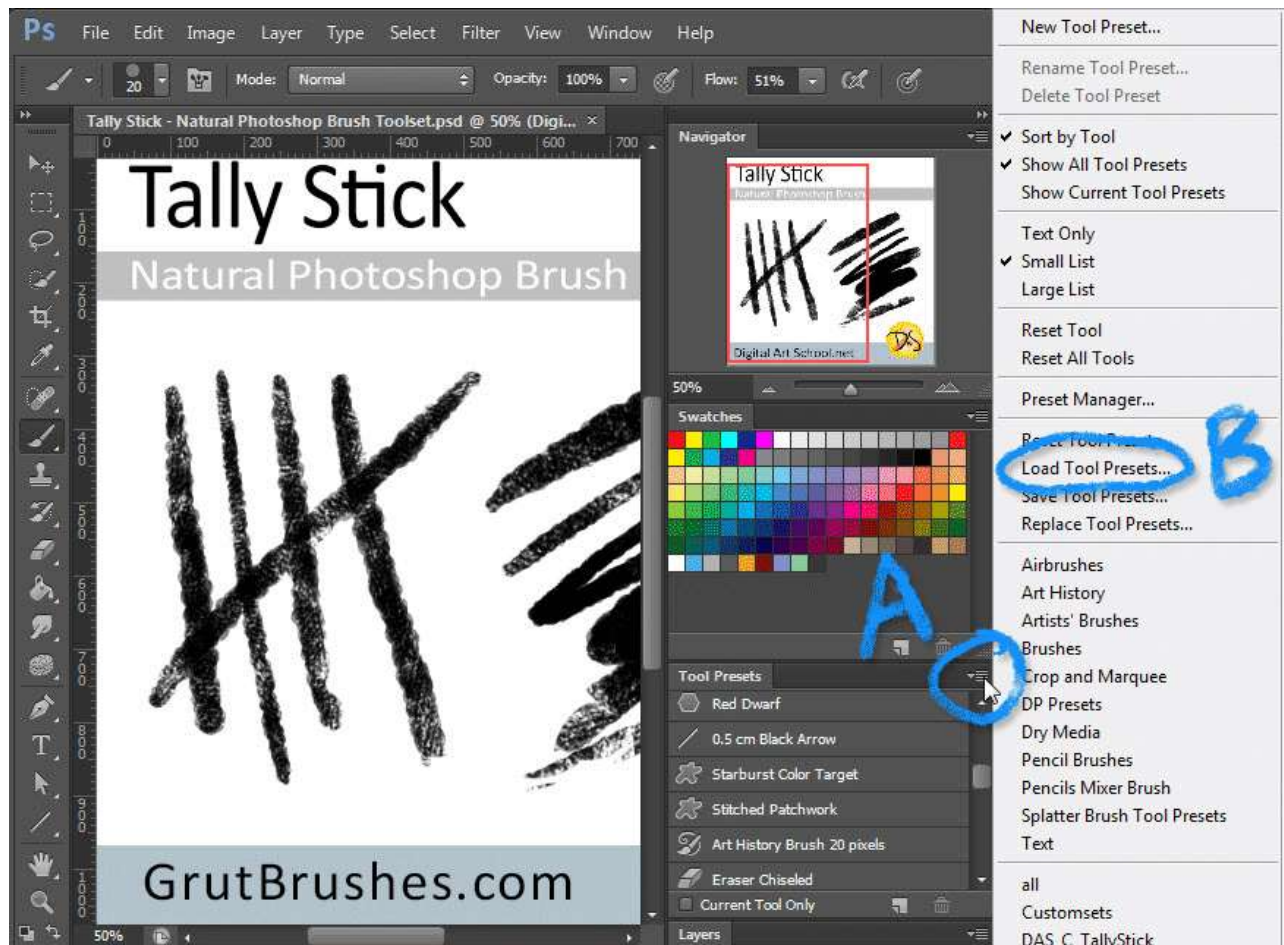
You can see a video version of this tutorial here: https://www.youtube.com/watch?v=7rm2Klwmv_4

1. Custom Photoshop brushes such as the GrutBrushes.com Photoshop brushes are actually Tool Presets (.tpl files) and are accessed through the Tool Preset panel.

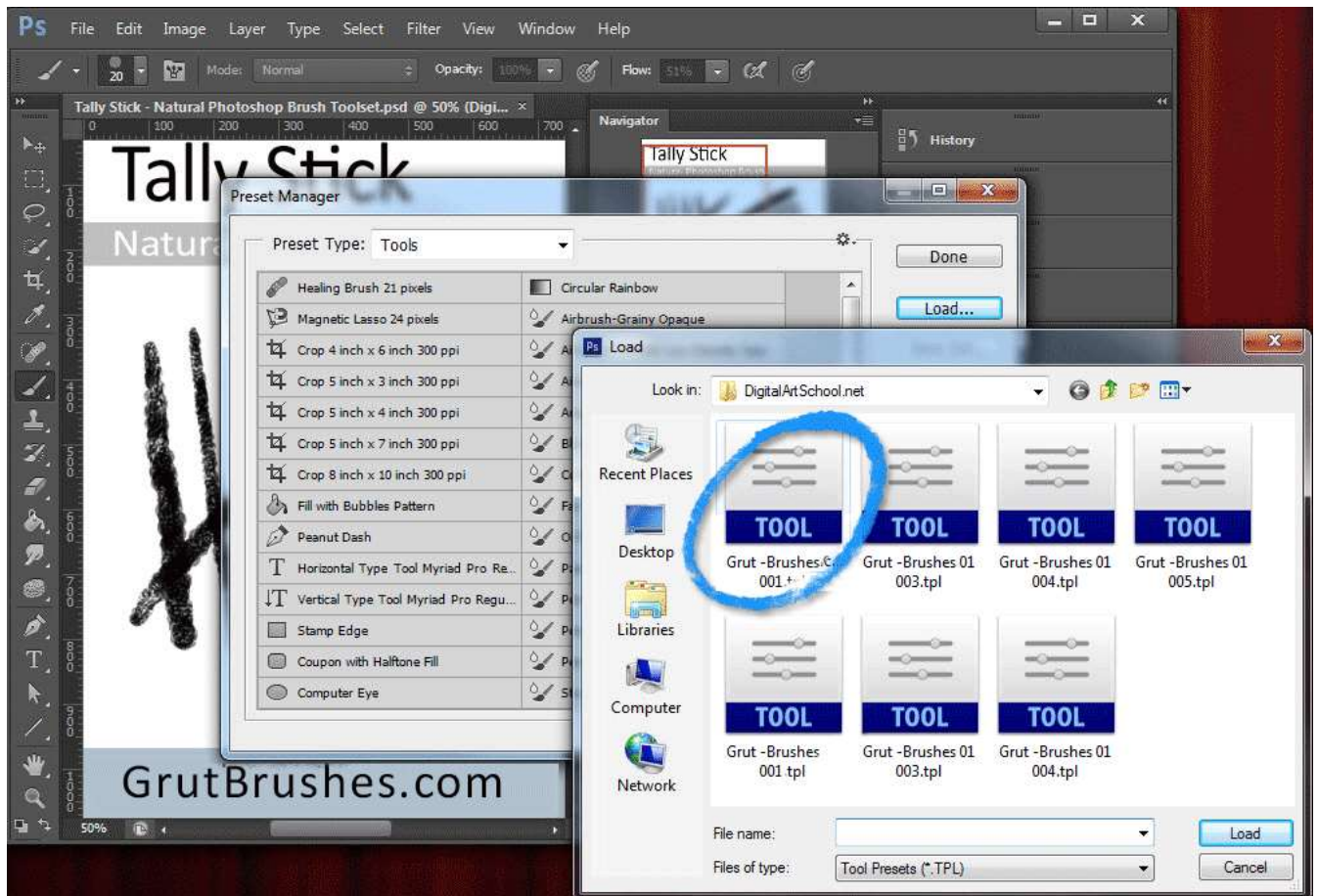


A) From the **Window** menu

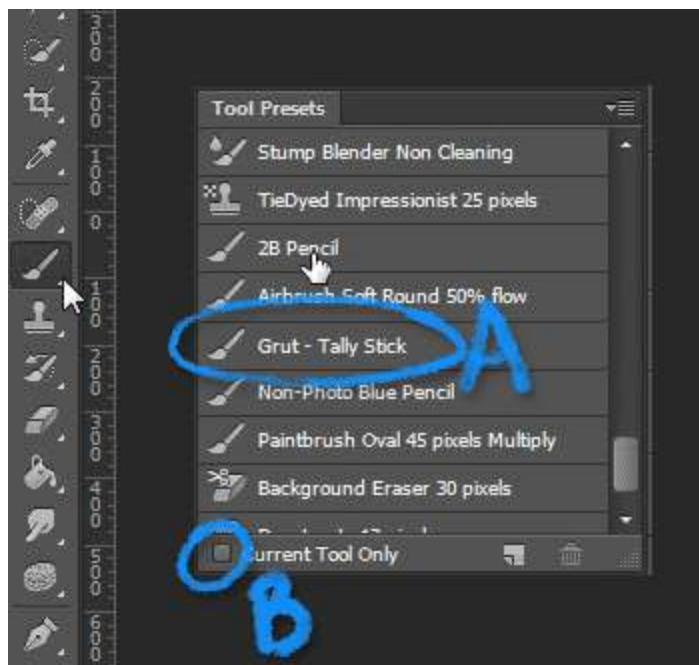
B) Open the **Tool Presets** panel (if it's not already open)



2. Choose "load preset" or open preset manager
 - A. Click on the arrow to open the **Tool Preset** menu
 - B. Choose **Load Preset**



3. Double click or choose the **.tpl file** of the brush toolset you want to load into Photoshop



A) The brushes you loaded should now appear in the **Tool Preset** panel.

B) If you can't see them, make sure you have the correct tool selected or uncheck the box that says "current tool only"

...now Enjoy your Custom brushes!

- **GrutBrushes.com**